

SINGLE-USER OFFICE SPACE

FOR LEASE

5,342 SF



DESIGNED BY MICHAEL HSU

MOVE-IN READY

CENTRAL LOCATION

central austin
management group

CONTACT

Courtney Landers
clanders@causmg.com

c: (512) 626-2752
o: (512) 416-1234 ext 1



ABOUT THE BUILDING

Designed by Michael Hsu Office of Architecture as its home office and expanded in 2016, this exceptional building provides beautiful spaces designed for both collaboration and privacy. 4910 Burnet Road is located in the heart of the Burnet Road corridor, with restaurants and services within walking distance. A private parking lot located behind the building offers ample parking for employees and guests. Full of special details, 4910 Burnet is move-in ready.

LOCATION

4910 Burnet Rd., Austin, Texas 78756

LEASE TERMS

Building Size: 5,342 SF

Base Rate: \$39/RSF/YR

Estimated NNN: \$19/RSF/FT includes water, gas, & electric

Parking: Private Lot with 25 spaces

Zoned: CS-V

BUILDING FEATURES

Two-story

Open floor concept

3 conference rooms

Landscaped patio

Private Yard

Lots of natural light

Galley Kitchen

Security System

AVAILABLE

Spring 2022

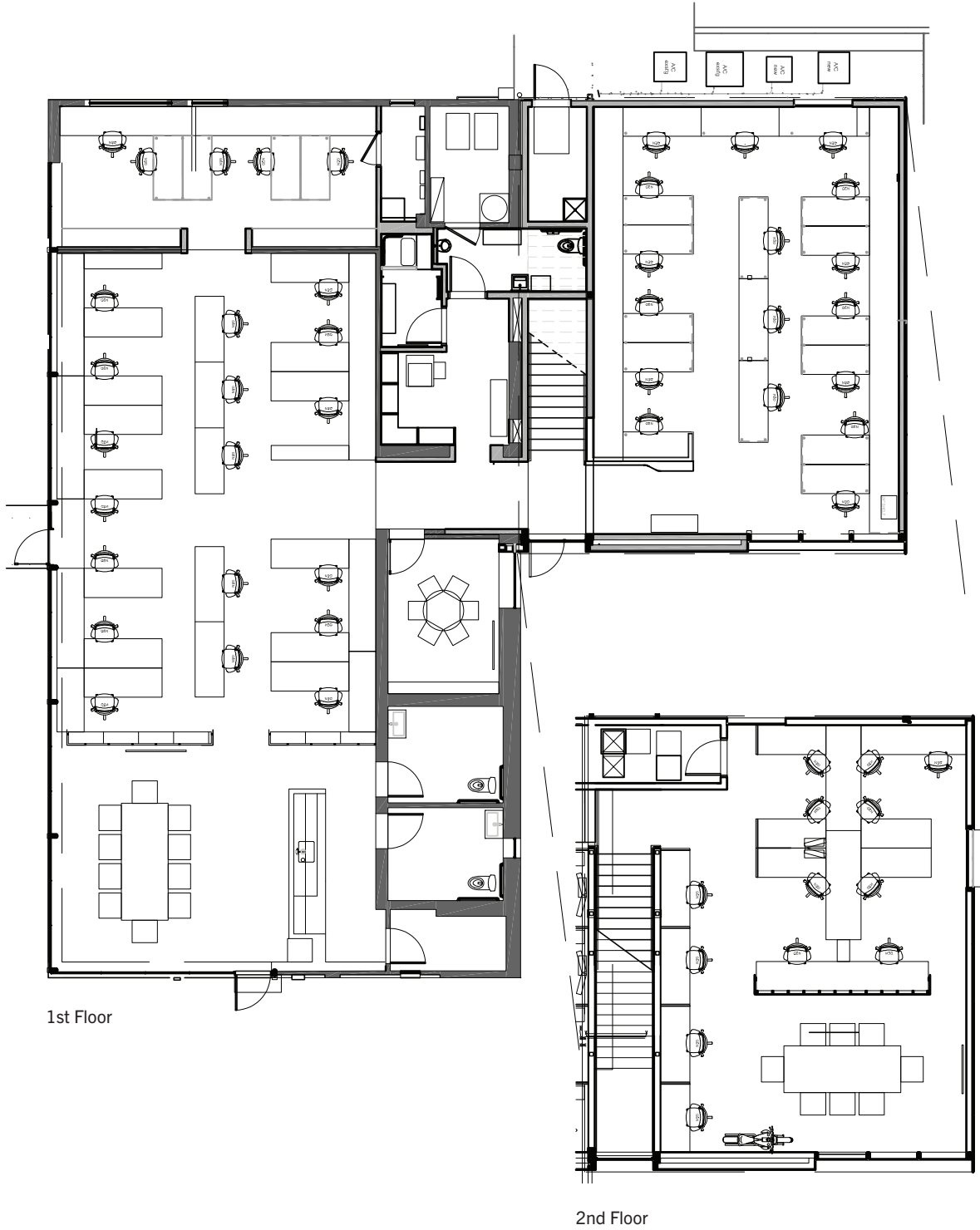


CONTACT



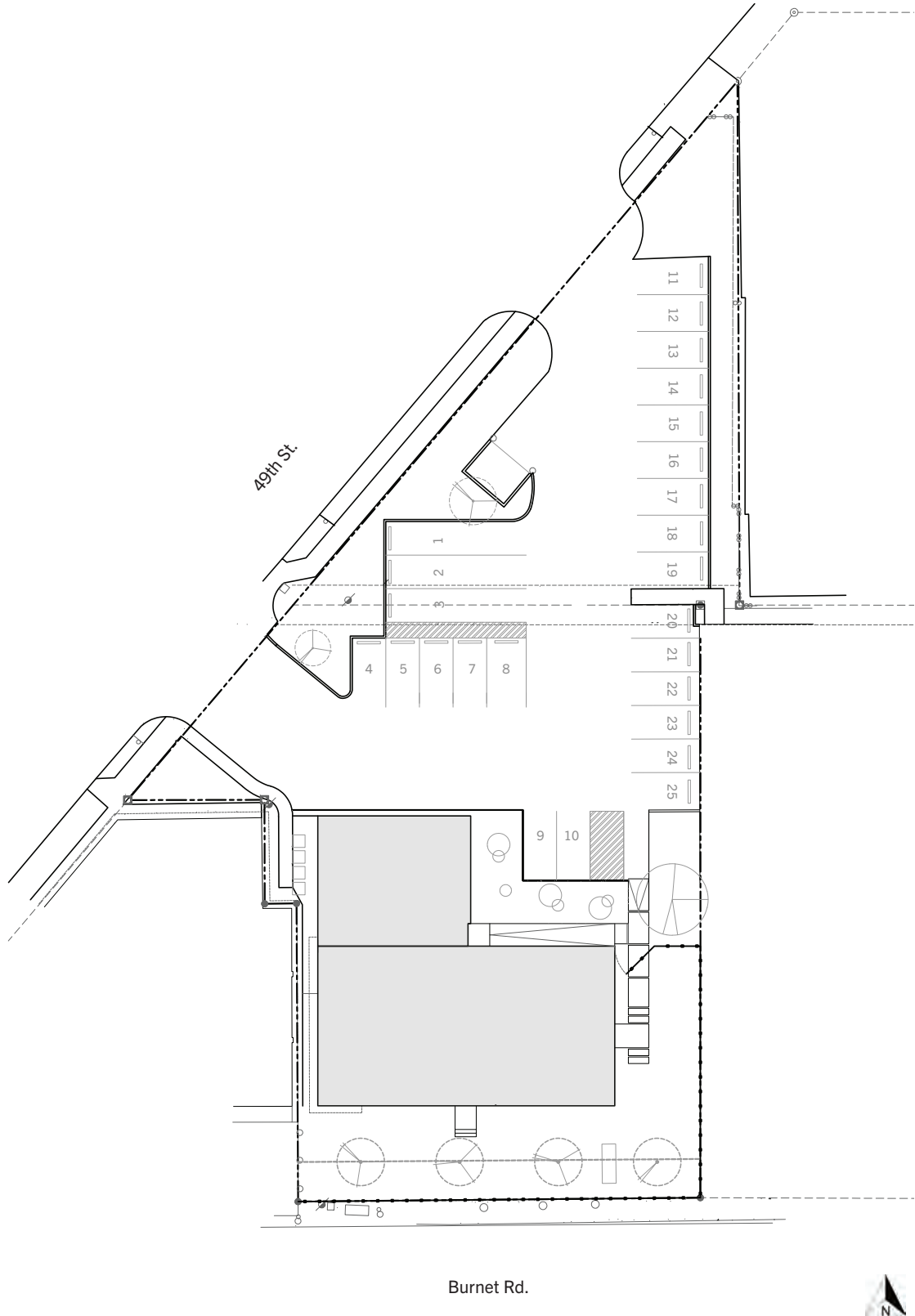
CONTACT

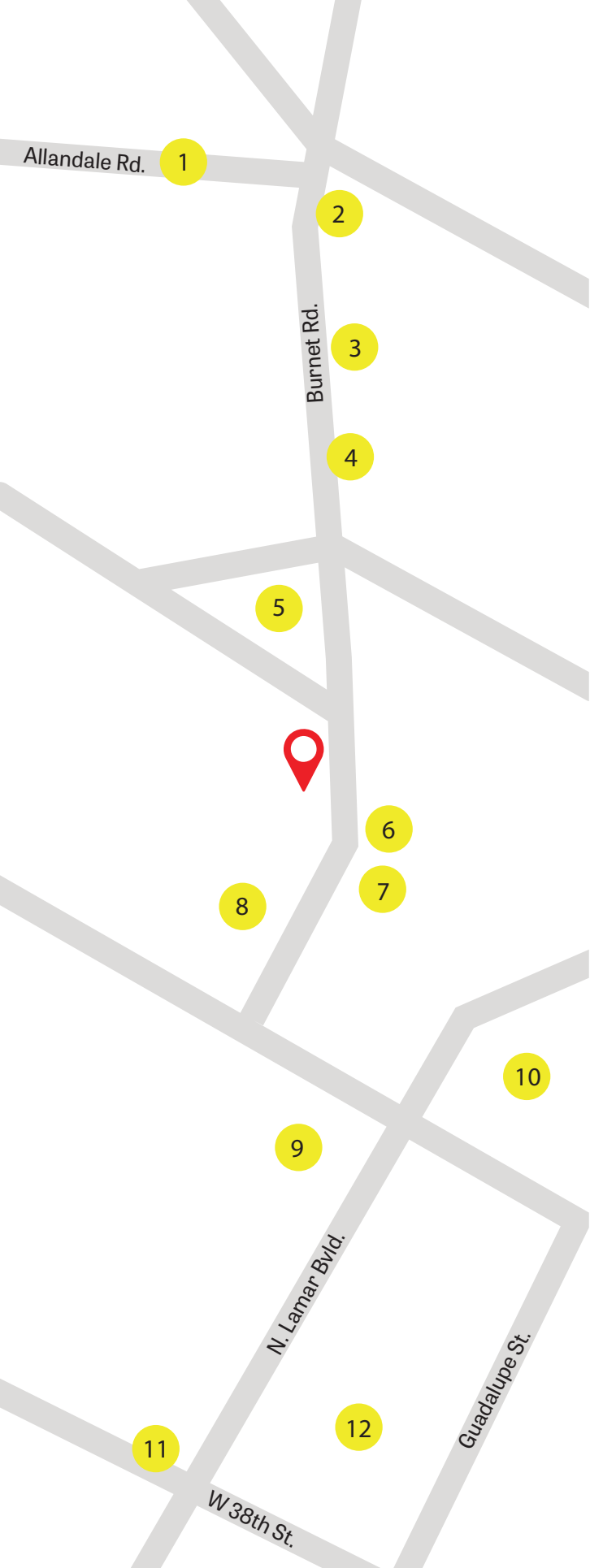
FLOOR PLAN



CONTACT

SITE PLAN





NEARBY RESTAURANTS & STORES

- 1 HEB
- 2 Amy's Ice Cream
- 3 Torchy's Tacos
- 4 Tiny Pies
- 5 T-Loc's Sonora Takeout
- 6 Picnik
- 7 Pinthouse Pizza
- 8 Honest Mary's
- 9 Uchiko
- 10 Natural Grocer
- 11 Snooze Eatery
- 12 Central Market

CONTACT